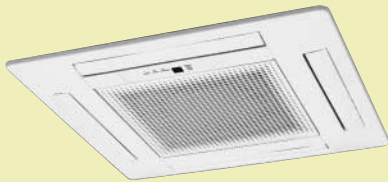


CASSETTE



Units



AUT12U/14U/18U



AUT25U/30R/36R/45R/54R

Remotes



For AUT12/14/18U



Wired type remote
(with weekly timer)
For AUT25/30/36/45/54

Outdoor Units



For AUT12U/14U



For AUT18U/25U



For AUT30R



For AUT36R/45R/54R

Efficient, simple, discreet

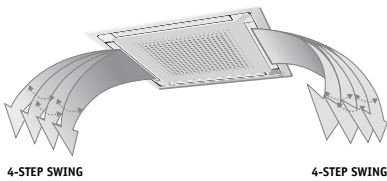
Incorporating the latest fan technology, these units fit neatly into the ceiling and distribute conditioned air through 2,3 or 4 sides of the unit. In addition, flaps allow air to be directed in either a pre-set or sweep pattern.

Weekly Timer*

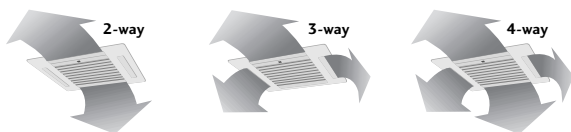
The sophisticated weekly timer not only makes it easy to adjust air conditioning units, but can also help realise considerable savings. It allows the air conditioning system to be programmed in advance to operate only as and when required. On/off times can be set twice a day throughout the week, with omit day facility, if required. The system can also be manually overridden.

Swing Louvres

The airflow direction, up or down is set automatically to match the operating mode, down for heating, up for cooling.



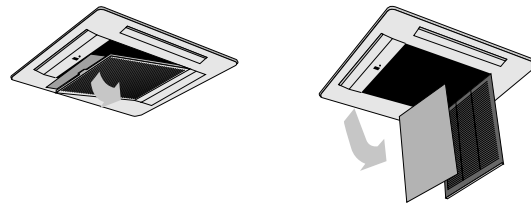
4-Way air flow system



*AUT25/30/36/45/54 models only

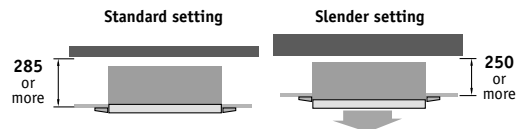
Simple maintenance

Detachable and washable air intake grille.



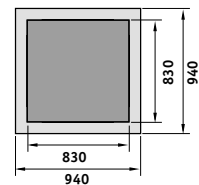
Slender Fit* (2-way setting)

This new mechanism enables the cassette body to move 35mm downward and allows installation into the space of 250mm. No special work or options is needed.



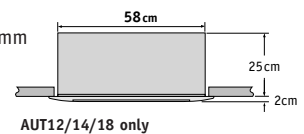
Slim Size*

The small & compact body allows space saving installation.



Compact Design

Designed to fit ceiling grids 600 x 600mm without major construction work.



AUT12/14/18 only

CASSETTE MODELS

Fujitsu General New Zealand Limited. A Subsidiary of FUJITSU GENERAL LIMITED.

Level 1, 8-10 Fitzherbert Street, Petone, Wellington, New Zealand.

Tel: (04) 568 8761 Fax: (04) 568 8763 • www.fujitsugeneral.co.nz • Email: contact@fujitsugeneral.co.nz



FUJITSU

SPECIFICATIONS

Type		COMPACT	COMPACT	COMPACT	CASSETTE	CASSETTE	CASSETTE	CASSETTE	CASSETTE	
Model No.	Indoor Unit	AUT12UBAB	AUT14UBAB	AUT18UBAB	AUT25UUAR	AUT30RLDW	AUT36RLC3W	AUT45RLB3W	AUT54RLB3W	
	Outdoor Unit	AOT12USAJL	AOT14USDAL	AOT18UNCKL	AOT25UNAKL	AOT30RMBL	AOT36RPA3L	AOT45RPA3L	AOT54RPA3L	
Super Power		Yes	Yes	Yes	Yes	Yes	Yes	Yes	Yes	
Moisture Removal		Yes	Yes	Yes	Yes	Yes	Yes	Yes	Yes	
Twin Flow		Yes	Yes	Yes	Yes	Yes	Yes	Yes	Yes	
Up/Down Swing Louvre		Yes	Yes	Yes	Yes	Yes	Yes	Yes	Yes	
Automatic Louvre		Yes	Yes	Yes	Yes	Yes	Yes	Yes	Yes	
Auto Shut Louvre		Yes	Yes	Yes	Yes	Yes	Yes	Yes	Yes	
Automatic Air Flow Adjustment		Yes	Yes	Yes	Yes	Yes	Yes	Yes	Yes	
Auto Restart		Yes	Yes	Yes	Yes	Yes	Yes	Yes	Yes	
Sleep Timer		Yes	Yes	Yes	No	No	No	No	No	
Timer		Yes	Yes	Yes	Weekly + Setback	Weekly	Weekly	Weekly	Weekly	
Auto Changeover Mode		Yes	Yes	Yes	Yes	Yes	Yes	Yes	Yes	
Reverse Cycle System		Yes	Yes	Yes	Yes	Yes	Yes	Yes	Yes	
Connectable Fresh Air Duct		Yes	Yes	Yes	Yes	Yes	Yes	Yes	Yes	
Connectable Distribution Duct		Yes	Yes	Yes	Yes	Yes	Yes	Yes	Yes	
Standard Filter		Yes	Yes	Yes	Yes	Yes	Yes	Yes	Yes	
Cooling Capacity	Watts	3550	4000	4850	7050	8600	10500	12700	14100	
	BTU/h	12100	13700	16600	24100	29400	36000	43500	48000	
Heating Capacity	Watts	4000	4600	5400	7800	9500	10700	13700	15800	
	BTU/h	13700	15700	18400	26600	33000	37000	47000	54000	
Power Supply	Volts	240	240	240	240	240	415	415	415	
Interconnect Wires-Size		7 - 1.5	7 - 1.5	7 - 1.5	4 - 1.5	4 - 1.5	4 - 1.5	4 - 1.5	4 - 1.5	
Recommended Min Power Cable Size	mm ²	2.5	2.5	2.5	4	4	2.5	2.5	2.5	
Phase-Frequency	Ph- Hz	1-50	1-50	1-50	1-50	1-50	3-50	3-50	3-50	
Power Supply Attachment		Outdoor	Outdoor	Outdoor	Outdoor	Outdoor	Outdoor	Outdoor	Outdoor	
Running Current	Cooling	Amps	5.5	6.3	8.2	11.8	15.5	7.0	8.3	
	Heating	Amps	5.4	6.3	9.2	10.5	14.5	6.2	8.4	
	Watts		1240	1450	1850	2700	3500	4100	5250	
Input	Cooling	Watts	1210	1450	2000	2430	3270	3500	4500	
	Heating	Watts	1210	1450	2000	2430	3270	3500	4500	
Moisture Removal	l/hr	1.3	1.5	2.1	2.5	4.0	5.0	6.0	5.5	
E.E.R.	Cooling	W/W	2.86	2.82	2.62	2.61	2.46	2.56	2.85	
C.O.P.	Heating	W/W	3.31	3.24	2.7	3.21	2.91	3.06	3.04	
Star Rating	Cooling		3.5	3	3	3	2.5	N/A	N/A	
	Heating		4	3	2	4	3	N/A	N/A	
Fan Speeds		3	3	3	3	3	3	3	3	
Air Circulation	l/s	153	153	172	305	333	415	460	495	
Compressor Type		Rotary	Rotary	Rotary	Rotary	Rotary	Scroll	Scroll	Scroll	
Dimensions and Weights	I.U.	Height	mm	235	235	235	246	246	296	296
		Width	mm	580	580	580	830	830	830	830
		Depth	mm	580	580	580	830	830	830	830
		Net Weight	kg	18	18	18	34	34	40	40
	O.U.	Height	mm	530	530	650	650	900	1152	1152
		Width	mm	750	750	830	830	900	940	940
		Depth	mm	250	250	320	320	350	370	370
		Net Weight	kg	34	35	52	59	80	100	110
Indoor Unit Hole Cutout Size	mm	600 x 600	600 x 600	600 x 600	890 x 890	890 x 890	890 x 890	890 x 890	890 x 890	
I.U. Sound Pressure Level	H/M/L	dBa@1m	42/39/36	42/39/36	44/38/35	43/40/37	46/42/39	48/44/39	49/46/42	52/48/44
O.U. Sound Pressure Level		dBa@1m	49	49	52	53	53	55	56	57
O.U. Sound Power Level		dBa	61	61	64	65	67	67	68	70
Refrigerant Type		R410A	R410A	R410A	R410A	R22	R22	R22	R22	
Connection Pipe Sizes	Gas	mm	9.52	12.7	12.7	15.88	15.88	19.05	19.05	19.05
	Liquid	mm	6.35	6.35	6.35	9.52	9.52	9.52	9.52	9.52
Maximum Pipe Length	Metre	20	20	20	25	25	50	50	50	
Maximum Pipe Height	Metre	8	8	8	15	15	30	30	30	
Pipe Connection Methods		Flare	Flare	Flare	Flare	Flare	Flare	Flare	Flare	
Condensate Pump Lift	mm	400	400	400	800	800	800	800	800	
Outdoor operating Temp	Cooling	Degrees C	0 to 43	0 to 43	0 to 43	0 to 43	0 to 43	0 to 52	0 to 52	
	Heating	Degrees C	-6 to 24	-6 to 24	-6 to 24	-7 to 24	-5 to 21	-8 to 21	-8 to 21	
Soft Starter		NA	NA	NA	Yes	Yes	NA	NA	NA	
Grille		UTG-UDYD-W	UTG-UDYD-W	UTG-UDYD-W	Included	Included	Included	Included	Included	

Body colour is white on all models. The heating method employed is the "Reverse Cycle Heating System" on all heating and cooling compatible models. Sound power level (cooling) is rated in accordance with AS 1217. Specifications and design subject to change without notice for further improvement. Please check with your dealer. MUST BE INSTALLED AND SERVICED BY ACCREDITED AIR CONDITIONING SPECIALIST. Recommended cable sizes are based on AS/NZS3000 and AS/NZS3008. Cooling only model specifications available upon request. Cooling/heating capacities are based on AS/NZS3823.

(Cooling) Indoor temp. : 27°C DB/19°C WB (Heating) Indoor temp. : 20°C DB
Outdoor temp. : 35°C DB/24°C WB Outdoor temp. : 7°C DB/6°C WB

GLOSSARY

Super Power – An efficient compressor and heat exchanger that quickly changes your room into a comfortable environment.

Moisture Removal – The in-built micro processor allows the air to be effectively dehumidified.

Twin Flow – Allows heated air to be directed down from the upper levels of the room, and in cooling, cool air flow is directed across the room.

Up/Down Swing Louvre – Up/Down swing louvre automatically swings in either direction.

Right/Left Swing Louvre – The right/left air louvre automatically swings in either direction.

Automatic Louvres – Automatically adjust themselves according to the operation mode. They can also be adjusted using the remote control.

Auto Shut Louvre – When the unit is switched on/off, the louvre automatically opens and closes.

Automatic Air Flow Adjustment – The micro-computer automatically adjusts the air flow, depending on changes in room temperature.

Auto Restart – Should there be a temporary loss of power, the unit will automatically restart itself in the same operating mode, once power is restored.

Sleep Timer – The micro processor gradually changes the room temperature, allowing you to sleep comfortably at night.

Timer – The timer allows you to select on/off modes.

Weekly Timer – Set variable on and off times each day for up to 7 days.

Auto Changeover Mode – The unit automatically switches between heating and cooling modes according to the temperature setting and room temperature.

Super Wave – The louvre automatically swings to left & right. Direction & angle can be changed easily.

Instant Air Exchange – Stale air is slowly removed.

Reverse Cycle Heating System – Your reverse cycle air conditioner heats as well as cools.

Connectable Fresh Air Duct – Allows introduction of fresh air to occupied space.

Connectable Distribution Duct – Branch duct connection for air distribution to adjacent areas.

Energy Efficiency Ratio (E.E.R.) – The E.E.R. shows the ratio of the cooling capacity for the input power at any given set of rating conditions. Unless indicated, this is derived from Watts/watt. (AS3823)

Co-efficiency of Performance (C.O.P.) – The C.O.P. shows the efficiency by giving a ratio of heating capacity for the input power at any given set of rating conditions. Unless indicated, this is derived from Watts/watt. (AS3823)

Standard Filter – Removes larger particles from the air to protect the air conditioner.

Electro Static Filter – The electro static filter cleans the air by removing invisible dust and the active charcoal element absorbs odours.

Wasabi Triple Filter – Fujitsu's anti-bacterial Wasabi triple filter eliminates pollen, mould and household dust. Perfect for pet lovers and asthmatics.

Air Purifying Filter – The air purifying filter traps fine dust as small as 0.01 microns, to purify and deodorise the air.

UV and Autoclean Filter – Fujitsu has developed the world's first autoclean filter system which allows the air conditioner to clean itself automatically so your Fujitsu Comfort will always be pure and clean.

Air Cleaning Filter – The air cleaning filter cleans the air by electrostatically removing invisible dust.

Soft Starter – Allows economical and quiet compressor start up.